

## FILL VALVE ASSEMBLY

Available with connections from 1" through to 4" Landon Kingsway's fill valve assemblies are used for filling fuel storage tanks they have been designed to allow external connection from tanker. The design features a flanged connection which bolts directly into Landon Kingsways Oil fill cabinet. Product supplied with cap and chain. Optional extra - strap and chain for preventing unwanted access.

To fill the fuel storage tank first electrically ground the tanker to the equipment. Connect the fuel tanker delivery hose to the male parallel BSP threaded connection point. Slowly open the level gate valve. Dispense the required amount of fuel into the tank. Close the gate valve to isolate the storage tank fill line. Disconnect the fuel tanker delivery hose. Disconnect tanker earth lead.

To prevent the accidental emptying of the fuel storage tank the valve must only be opened when a fuel tanker delivery hose is connected.

### Technical Specification

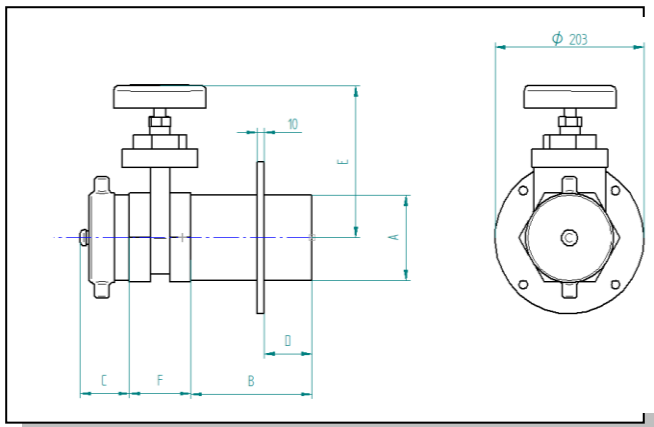
#### Material:

Nut & Washer Mild Steel  
Nameplate Aluminium  
Handwheel Cast Iron  
Stem CZ114 Brass  
Gland Nut LG2 Bronze  
Gland Packing PTFE  
Bonnet LG2 Bronze  
Check Nut LG2 Bronze  
Wedge LG2 Bronze  
Body LG2 Bronze  
Pipes and Flange Mild Steel Zinc Plated

Screwed Spec: BSP parallel

Pressure PN20

Temperature -20°C to 180°C



Picture above shows fill valve assembly note chain provided but not shown.

Dimension (mm)

Part Number	Kv	A	B	C	D	E	F
40001605	66	1" BSP	190	70	65	90	50
40001601	269	2" BSP	164	85	65	140	65
40001602	411	2 1/2" BSP	153	100	65	180	80
40001603	795	3" BSP	144	100	65	210	90
40001604	1273	4" BSP	150	165	65	250	102



Picture above shows fill valve assembly fitted within Landon Kingsway Oil fill Cabinet, Hydrostatic Tank Contents gauge and filguard alarm panel with BMS output.